

A modern building facade with large windows and a red geometric overlay. The building is shown in a grayscale or muted color palette, with the red overlay creating a dynamic, angular shape that frames the central window. The central window is brightly lit from within, showing a living room with a sofa and a large TV. Other windows show different interior spaces, including a dining area and a kitchen. The overall aesthetic is clean, minimalist, and contemporary.

portofino

METAL DOORS AND WINDOWS SERIES

by Salazar Iron Design

8989 County Road 946 Celina TX. 75009 - P: 214.517.5359 - www.salazarirondesign.com

portofino

METAL DOORS AND WINDOWS SERIES

by Salazar Iron Design

8989 County Road 946 Celina TX, 75009 - P: 214.517.5359 - www.salazarirondesign.com



8989 County Road 946
Celina TX. 75009 - P: 214.517.5359
BBB Accredited Business - Insured - Bonded

montevideo



8989 County Road 946
Celina TX. 75009 - P: 214.517.5359
BBB Accredited Business - Insured - Bonded





8989 County Road 946
Celina TX. 75009 - P: 214.517.5359
BBB Accredited Business - Insured - Bonded



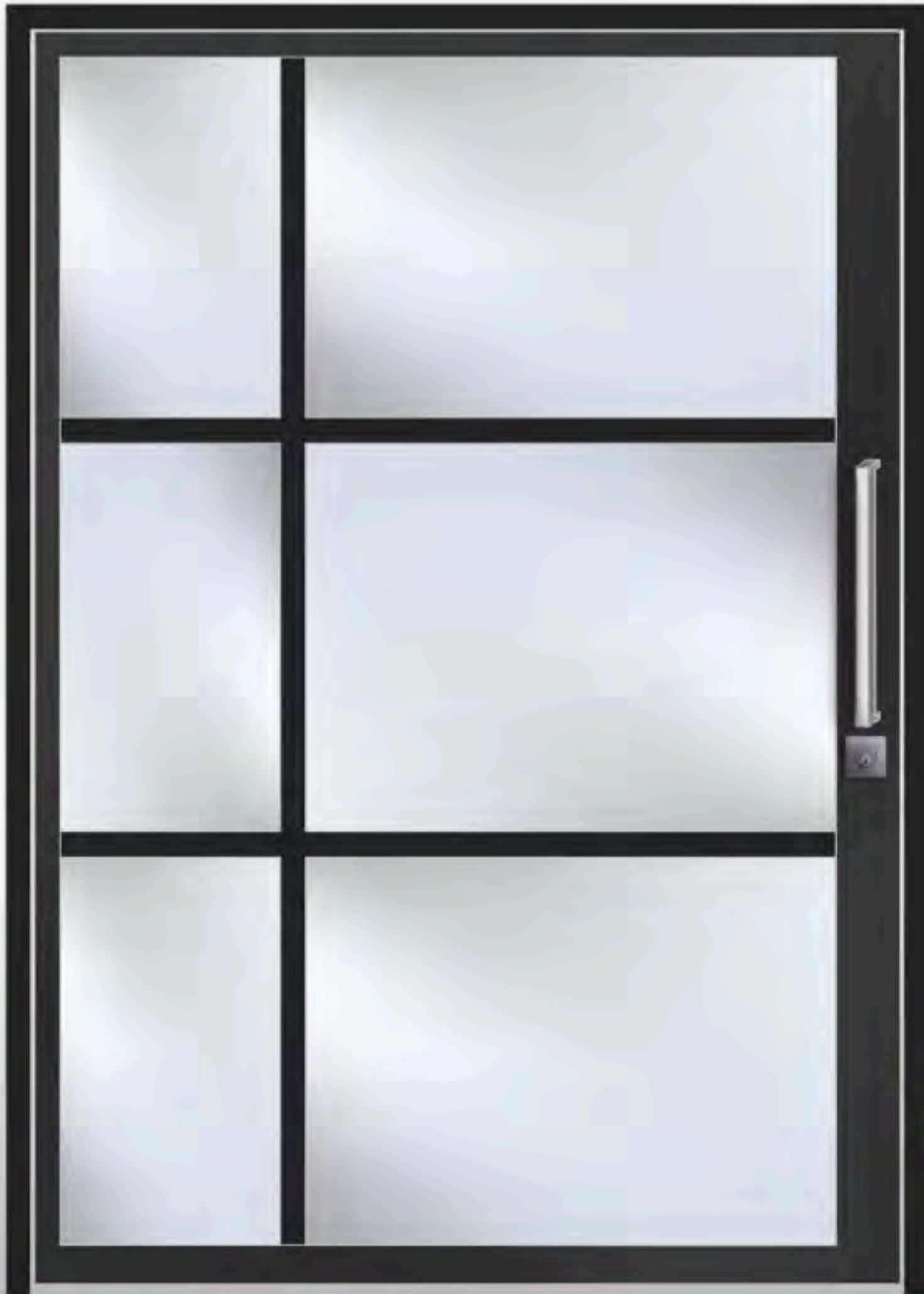
amanecer

pivot door



8989 County Road 946
Celina TX. 75009 - P: 214.517.5359

BBB Accredited Business - Insured - Bonded



claridad

pivot door



8989 County Road 946

Celina TX. 75009 - P: 214.517.5359

BBB Accredited Business - Insured - Bonded





miravista

pivot door



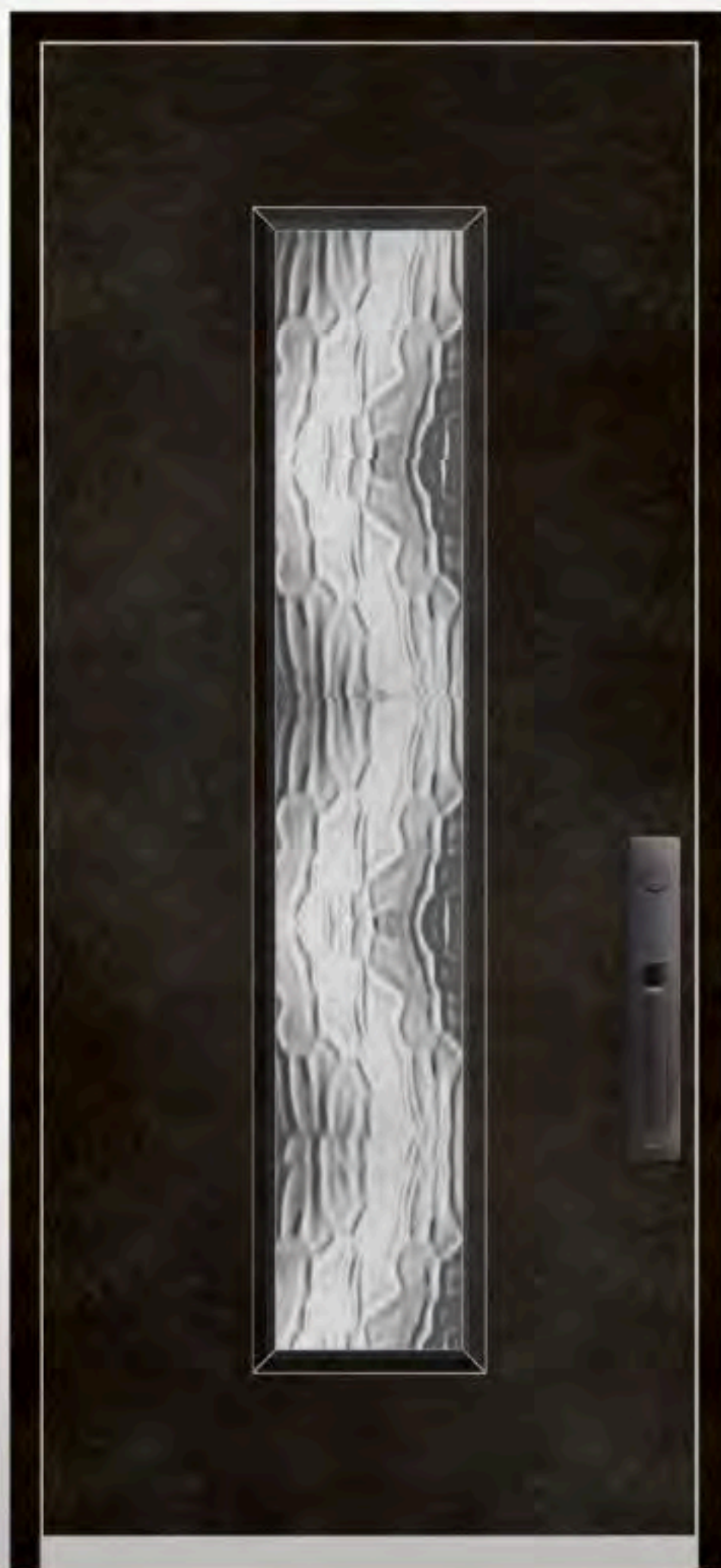
8989 County Road 946

Celina TX. 75009 - P: 214.517.5359

BBB Accredited Business - Insured - Bonded



portales



8989 County Road 946

Celina TX. 75009 - P. 214.517.5359

BBB Accredited Business - Insured - Bonded



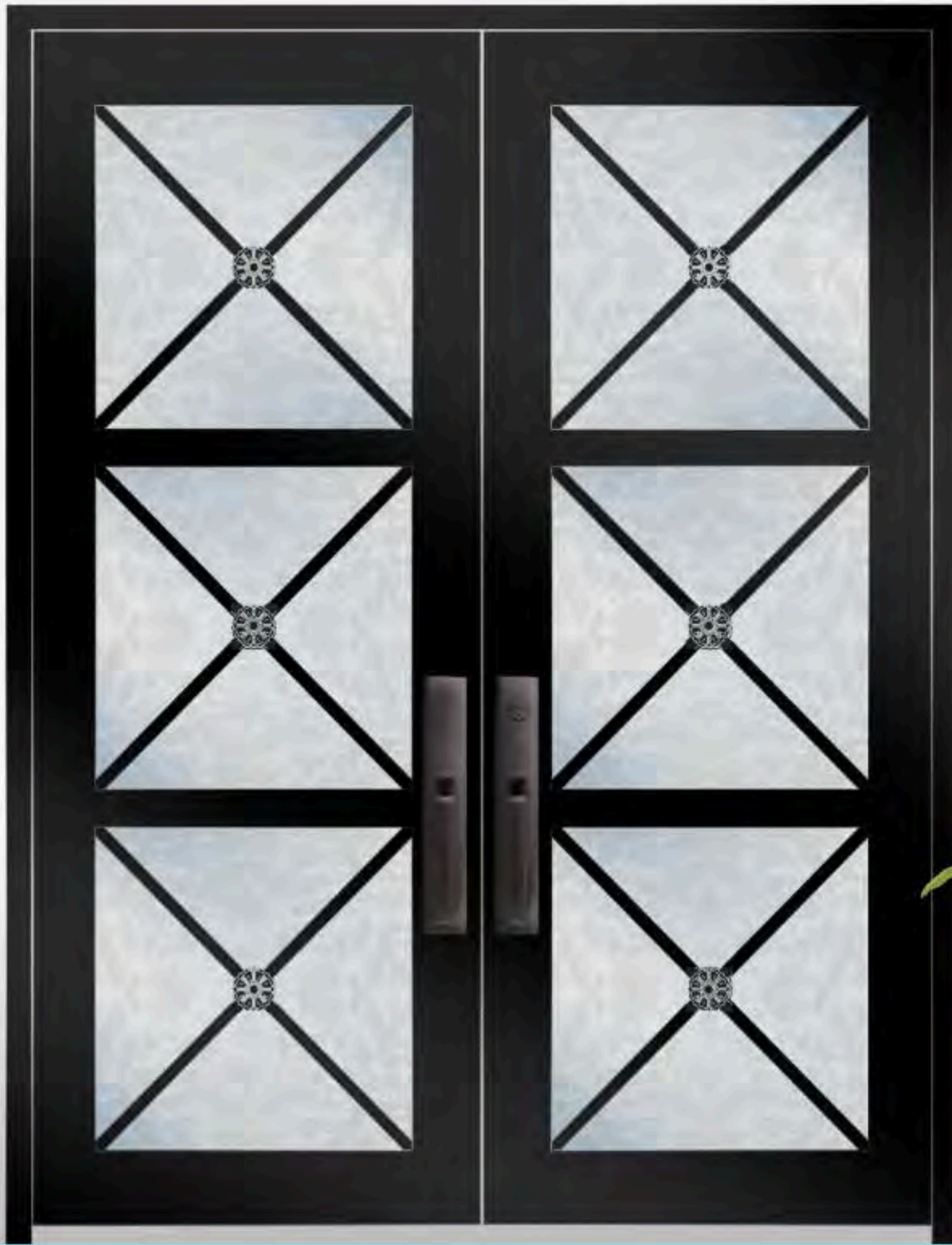
sentinel



8989 County Road 946

Celina TX. 75009 - P: 214.517.5359

BBB Accredited Business - Insured - Bonded



la joya

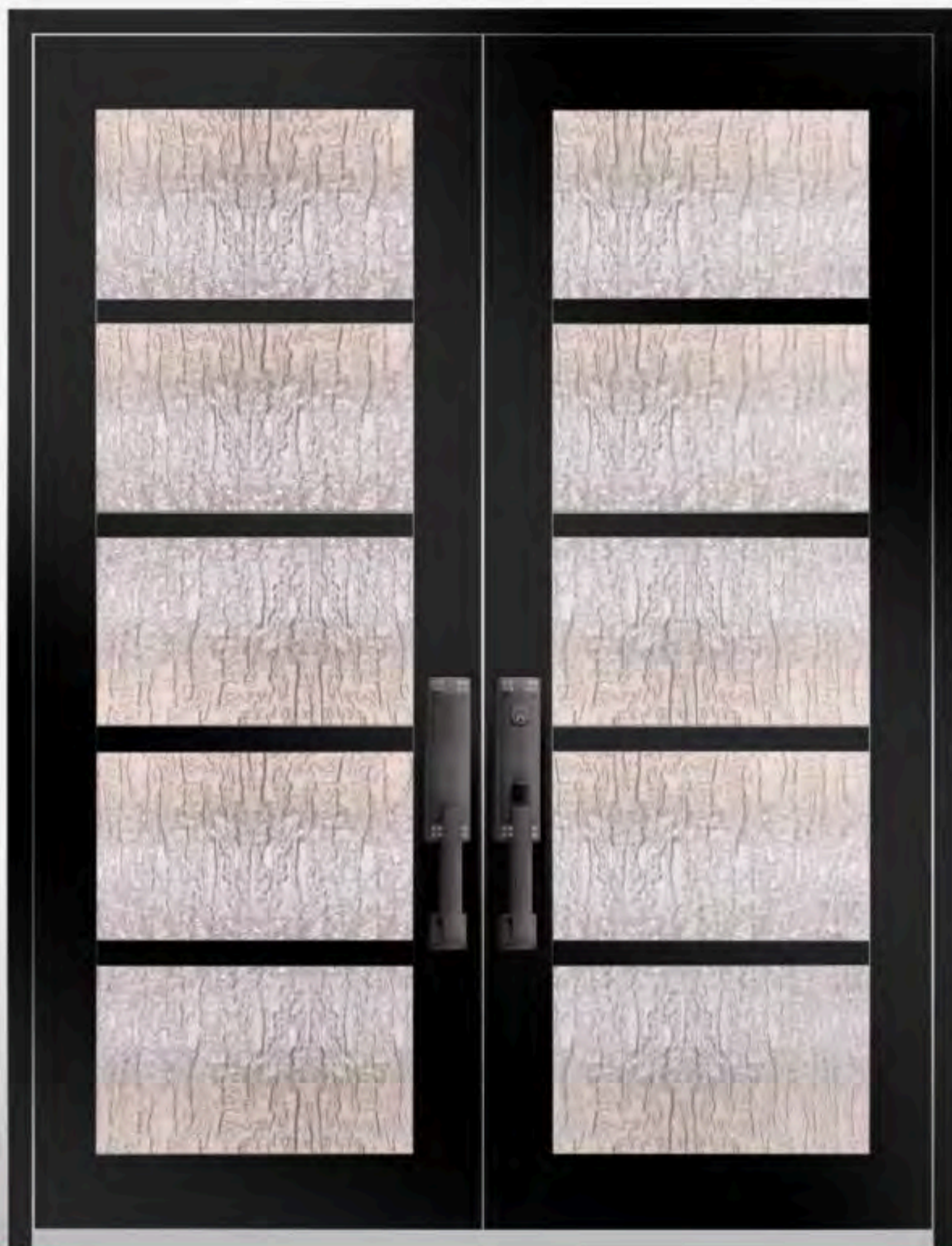
twin



8989 County Road 946

Celina TX. 75009 - P. 214.517.5359

BBB Accredited Business - Insured - Bonded



losalle

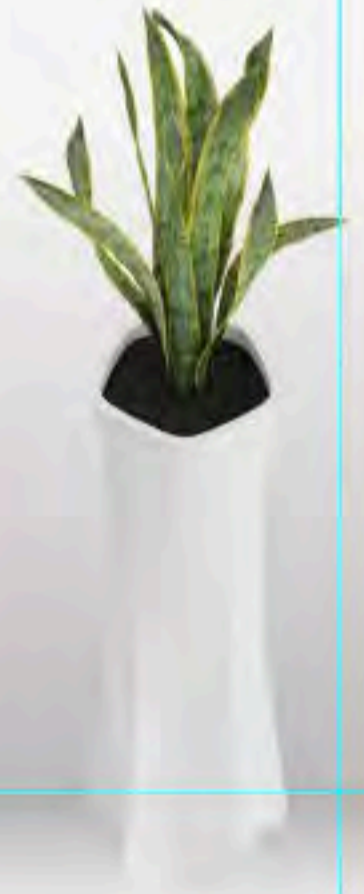
twin



8989 County Road 946

Celina TX. 75009 - P: 214.517.5359

BBB Accredited Business - Insured - Bonded



twin

montevideo

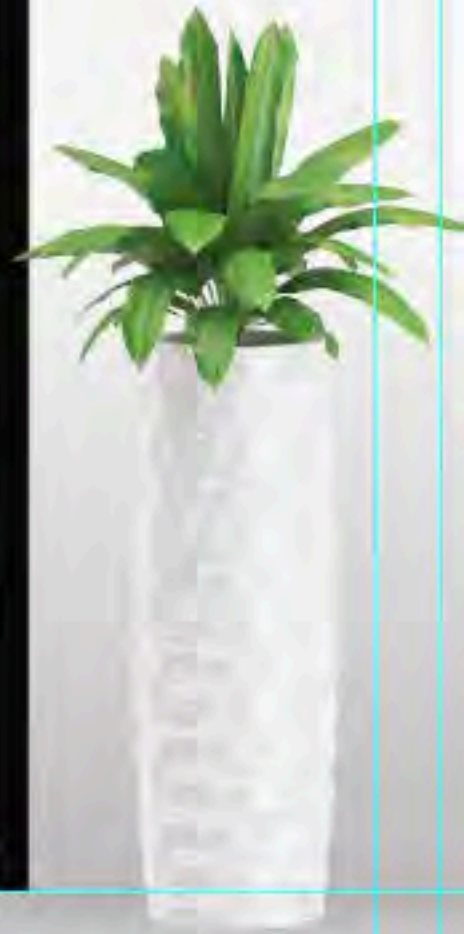


8989 County Road 946
Celina TX. 75009 - P: 214.517.5359

BBB Accredited Business - Insured - Bonded

portales

twin



8989 County Road 946
Celina TX. 75009 - P: 214.517.5359
BBB Accredited Business - Insured - Bonded



sentinel

twin



8989 County Road 946

Celina TX. 75009 - P: 214.517.5359

BBB Accredited Business - Insured - Bonded



8989 County Road 946
Celina TX. 75009 - P: 214.517.5359
BBB Accredited Business - Insured - Bonded



zolida

twin



8989 County Road 946

Celina TX. 75009 - P: 214.517.5359

BBB Accredited Business - Insured - Bonded

GLASS



Glue Chip



Flemish



Clear



Aquatex



Rain

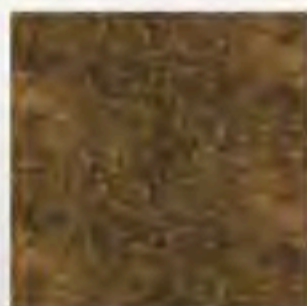


Low E



Reeded

FAUX FINISH



Antique Bronze



Patina Silver



Antique Cooper



Iron Black



8989 County Road 946
Celina TX. 75009 - P: 214.517.5359

BBB Accredited Business - Insured - Bonded

Salazar Luxe Steel Line units are custom handcrafted that will take your home or business to a higher level, providing it with a luxurious, elegant look. Thin frames, narrow sight lines for a unique sophisticated look that is equally beautiful, functional and secure. At Salazar We strive to exceed expectations providing excellent customer service, attention to details, and highly skilled artisans bringing over 100 years of combined experience.

All units are fabricated locally in our own facility, which allows us to control our lead times and make sure that each and every piece is handcrafted. We use the finest steel materials that enables us to create beautiful, modern, & secure works of art to fit each individual project. We provide you with the highest quality products in the steel line industry.

We would love to implement your design ideas & offer you several attractive design options. We can work directly with you to completely custom design your unit from scratch into something beautiful and unique just for you, that will meet or exceed your expectations.

Salazar Creates High Quality Luxury Steel Units:

- *Steel doors
- *Steel Windows; casements, awnings, etc.
- *Pivot Doors
- *Bifold Doors
- *Gates
- *Railing
- *Hardware
- *And much more

We truly appreciate your interest in our company. We look forward to start working with you to create your work of art!



8989 County Road 946

Celina TX. 75009 - P: 214.517.5359

BBB Accredited Business - Insured - Bonded

portofino

METAL DOORS AND WINDOWS SERIES

by Salazar Iron Design

8989 County Road 946 Celina TX. 75009 - P: 214.517.5359 - www.salazarirondesign.com